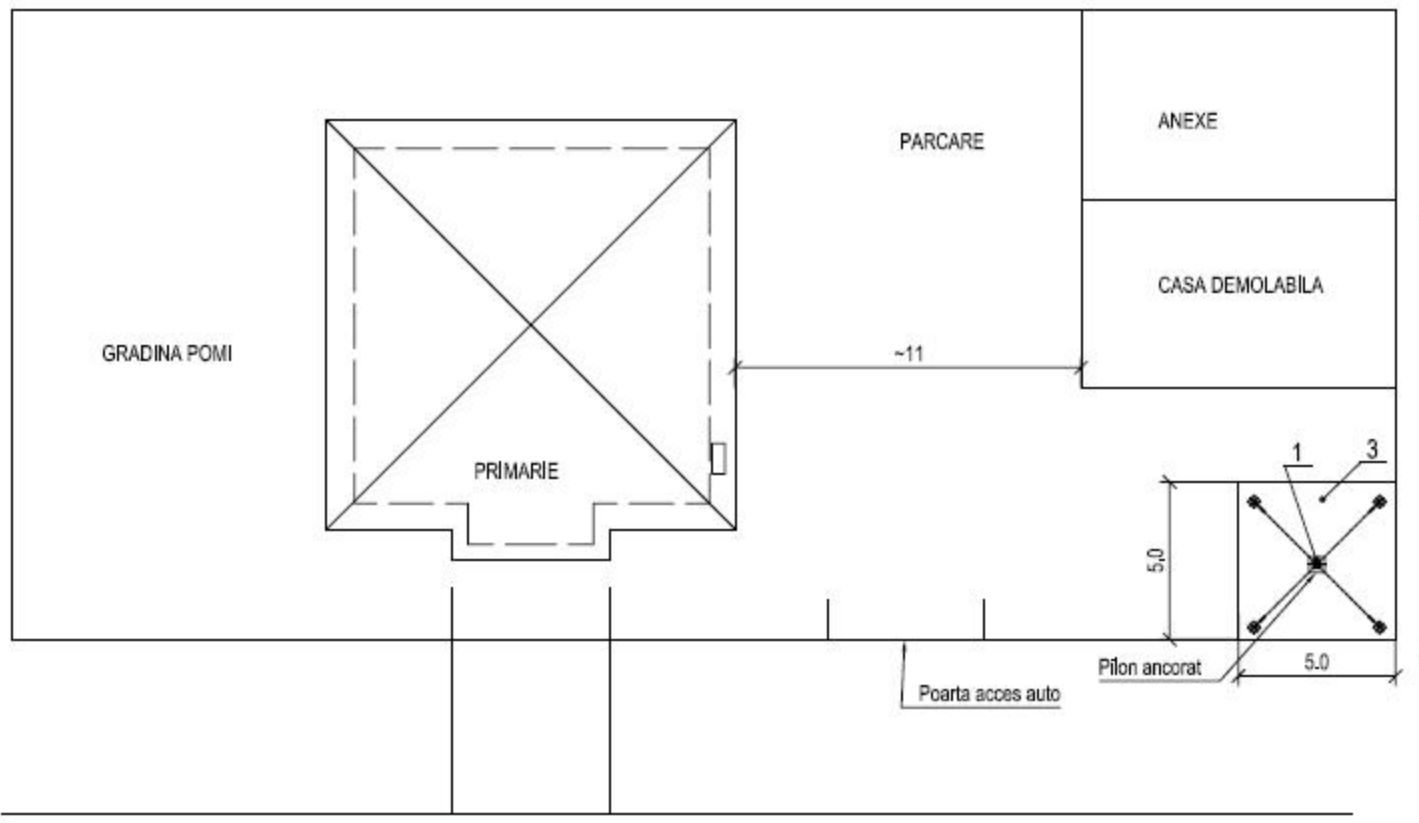
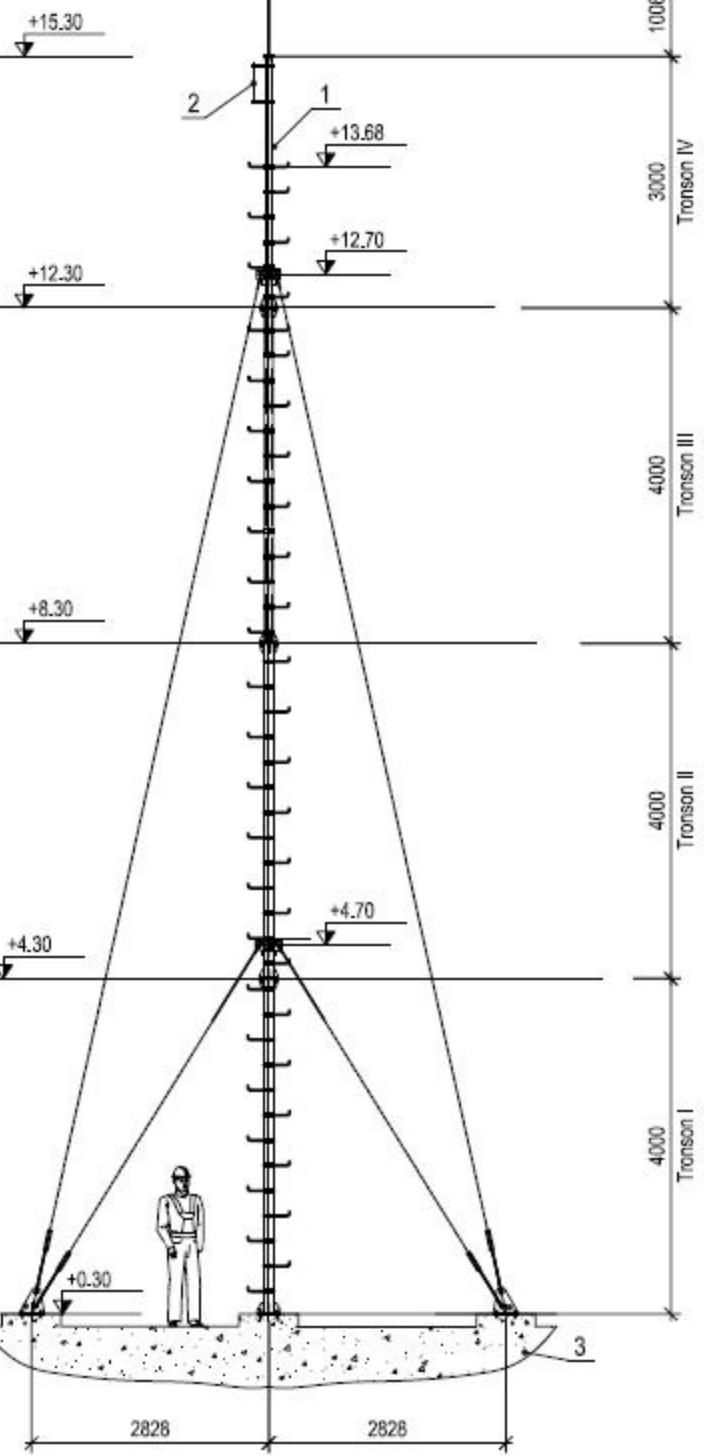
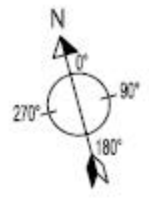
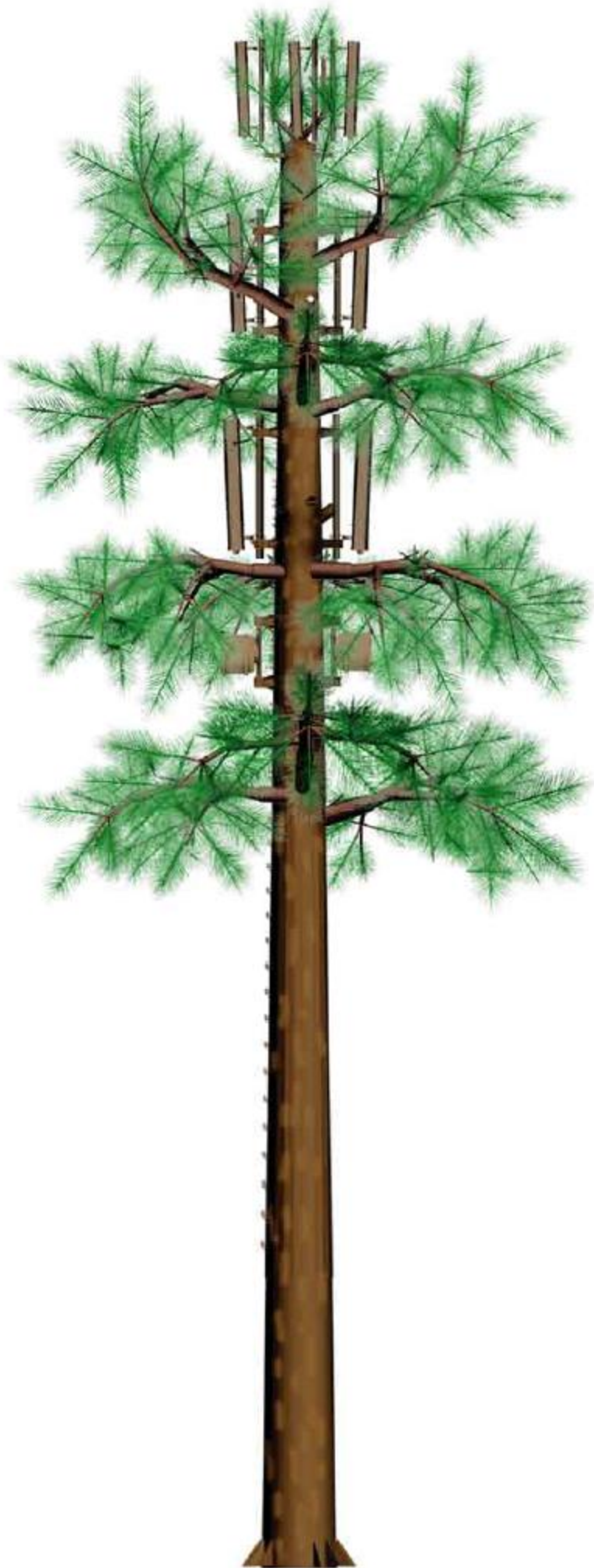


ELEVATIE
1:75



Cellular Pine Tree



Structures

Monopole



Product Description

The monopole is a versatile tubular pole developed for the world wide cellular market, with special attention paid to environmental acceptance. Aesthetic design was considered a top priority during the development stages. The efficiency of the design allows it to be an

economic option for a range of heights from 0m up to 40m. The monopole can be used for microwave links, cellular and telecommunications applications.